

To Mount your WLC network home folder from Mac OS X

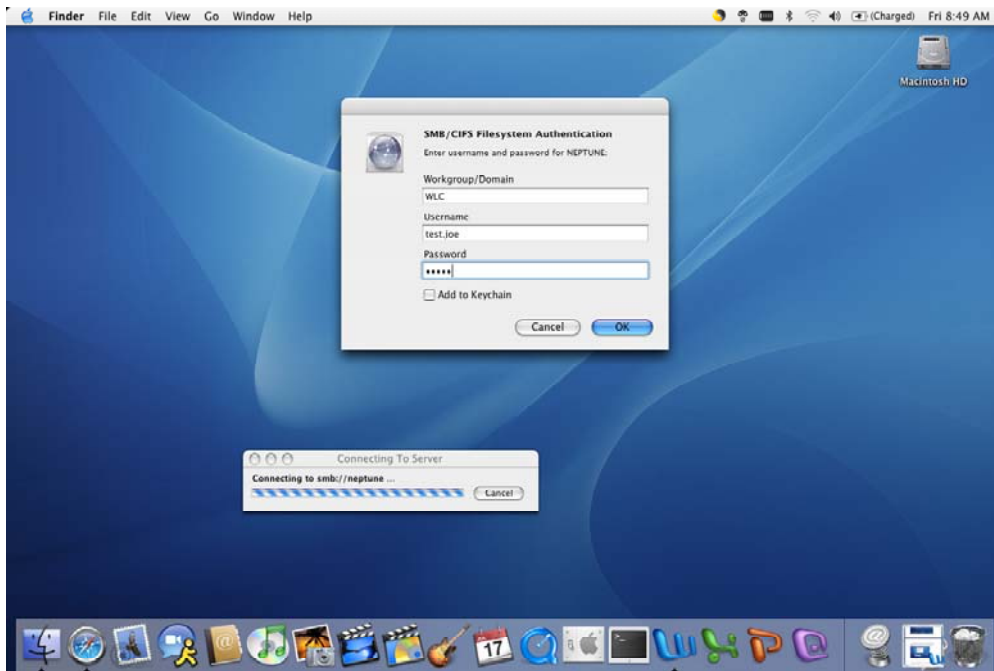
1. From the Finder window click on **Go** and then select **Connect to Server...**



2. The following window will appear. **NOTE:** *Faculty/Staff* type in **smb://Neptune** in Server Address box and click **Connect**. *Students* type in **smb://wlc7** in Server Address box and click **Connect**.



3. You will be prompted with the following window. The Workgroup/Domain field should read **WLC**. The Username is your WLC network username in the format Lastname.Firstname followed by your WLC network password. Then choose OK.



4. You then receive the SMB Mount window. Choose the drop-down and scroll to find your username and then click **OK**.



5. You now have access to your WLC home folder.



6. To reconnect after a reboot you can from the Finder window choose **Go** and then **Recent Folders** and then choose your home directory. You will then be asked to re-authenticate with your WLC network username and password.

