

Instructions for setting up the Outlook client for Outlook Anywhere – Exchange account already configured.

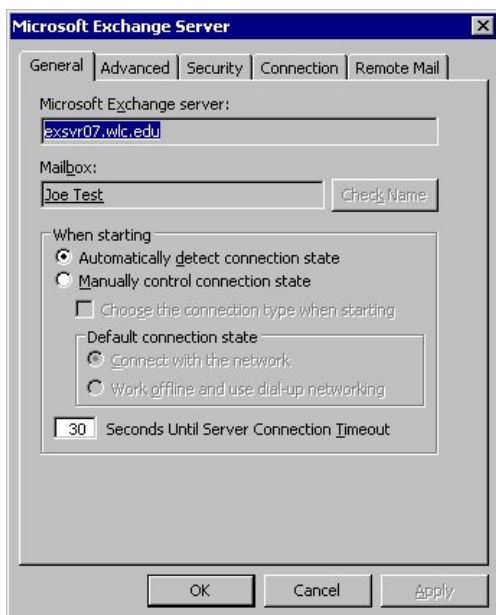
1. Right-click on Mailbox-(your name) and choose **Properties for "Mailbox - (your name)"**..



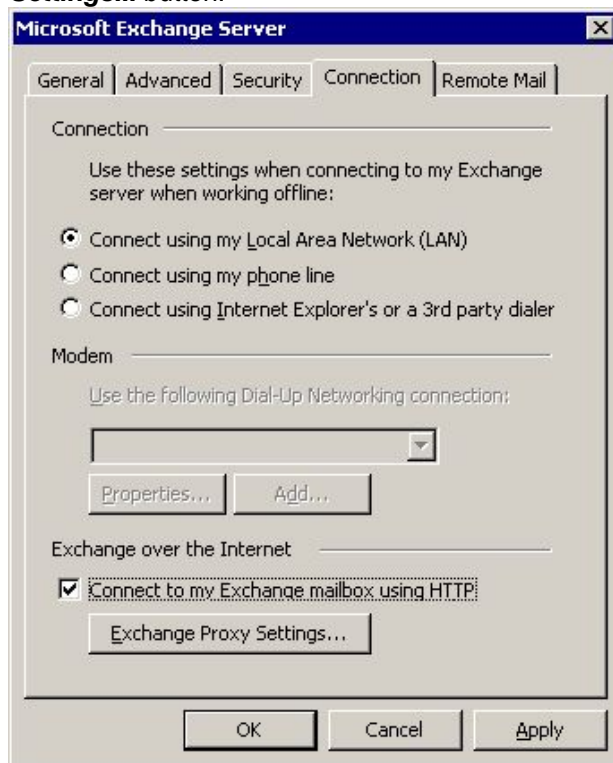
2. Click on the **Advanced** button.



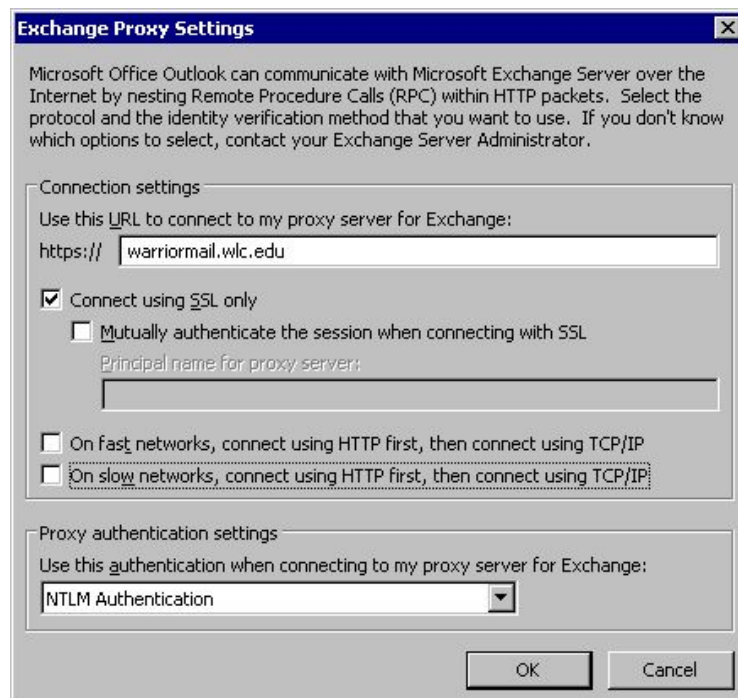
3. Click on the **Connection** tab.



4. Check **Connect to my Exchange mailbox using HTTP** Click on the **Exchange Proxy Settings...** button.



5. Enter **warriormail.wlc.edu** for the URL as pictured below. Click **OK**. Click **OK** again.



6. Click **Ok** 3 times and restart Outlook.

